

6

5

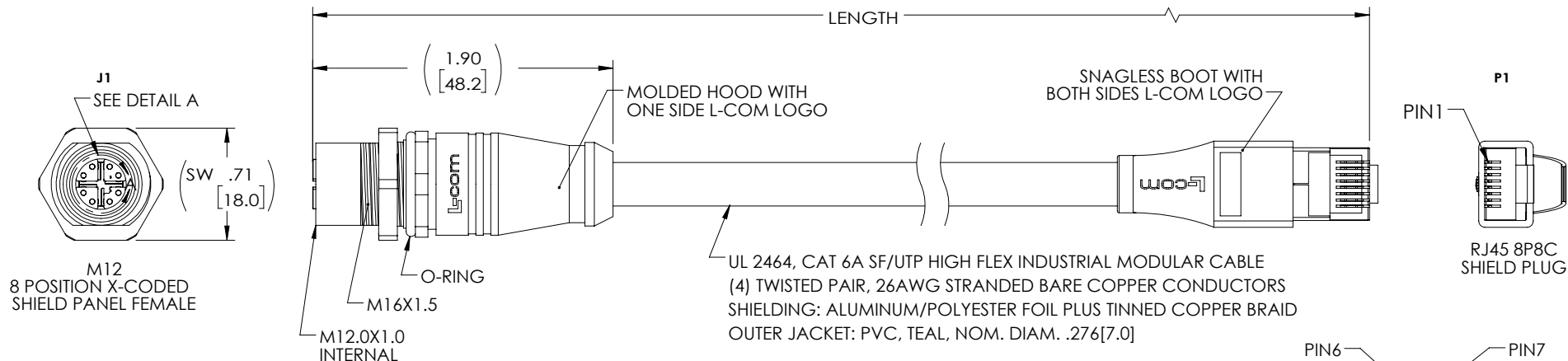
4

3

2

1

REVISION				
ZONE	REV	DESCRIPTION	DATE	CHANGED BY
	A	INITIAL RELEASE	08/04/2025	BZHANG
				APPROVED
				WLI



NOTES

MATERIAL:

MOLDED HOOD: PVC, BLACK, UV RESISTANCE
M12 INSULATOR: NYLON, BLACK
M12 SHELL/SCREW NUT: BRASS, NICKEL PLATE
M12 CONTACTS: PHOSPHOR BRONZE, 15μ" MIN. GOLD PLATE
O-RING: VITON
SNAGLESS BOOT: LOW SMOKE ZERO HALOGEN, BLACK
RJ45 HOUSING: POLYCARBONATE, CLEAR UL94 V-0
RJ45 SHIELD/STRAIN RELIEF: BRASS, NICKEL PLATE
RJ45 CONTACTS: PHOSPHOR BRONZE, 50μ" MIN. GOLD PLATE IN CONTACT AREA OVER NICKEL PLATE OVERALL

ELECTRICAL:

NOMINAL VOLTAGE RATING: 48 V AC/DC
MAX CURRENT: 0.5A

APPLICATION:

INGRESS PROTECTION RATING IS IP67 (MATED, J1 ONLY).

ENVIRONMENTAL:

OPERATING TEMPERATURE RANGE: -40°C TO +75°C
CABLE JACKET: OIL, SUNLIGHT and WELD SPATTER RESISTANT
CABLE FLEX LIFE: 1 MILLION CYCLE TEST (10X CABLE OD)
10 MILLION CYCLE TEST (20X CABLE OD)

MISCELLANEOUS

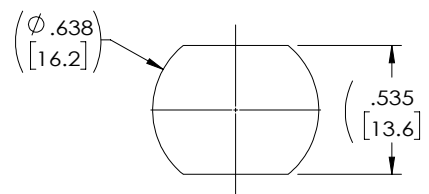
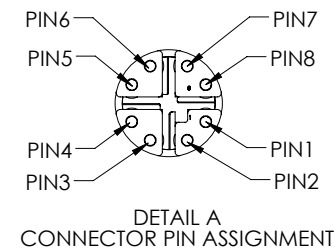
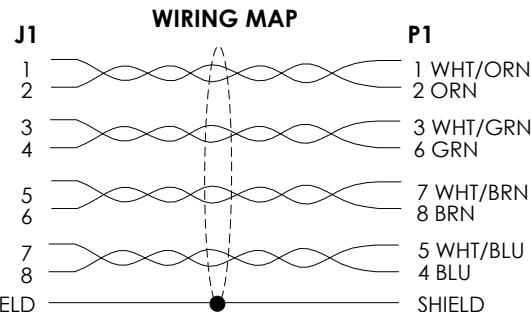
CABLE ASSEMBLIES TO BE TESTED FOR CONTINUITY
WIRED TO IEC 61076-2-109 STANDARDS
CABLE ASSEMBLY SHALL BE INDIVIDUALLY PACKAGED IN ACCORDANCE WITH L-COM SPECIFICATION PS-0031.

REGULATORY COMPLIANCE:

EU RoHS DIRECTIVE (MOST RECENT RELEASED VERSION)

THE INFORMATION CONTAINED IN THIS DRAWING IS THE SOLE PROPERTY OF INFINITE ELECTRONICS, INC. ANY REPRODUCTION IN PART OR WHOLE WITHOUT THE WRITTEN PERMISSION OF INFINITE ELECTRONICS, INC. IS PROHIBITED. THESE COMMODITIES, TECHNOLOGY OR SOFTWARE WERE EXPORTED FROM THE UNITED STATES IN ACCORDANCE WITH THE EXPORT ADMINISTRATION REGULATIONS. DIVERSION CONTRARY TO U.S. LAW PROHIBITED.

LC LG Rev-D5 Asize



RECOMMEND MOUNT HOLE

PART NUMBER	LENGTH	
	METERS	FEET
TRG611-C6T-05M	0.5	1.64
TRG611-C6T-1M	1.0	3.28
TRG611-C6T-2M	2.0	6.56
TRG611-C6T-3M	3.0	9.84
TRG611-C6T-5M	5.0	16.41
TRG611-C6T-10M	10.0	32.82
TRG611-C6T-15M	15.0	49.22

UNLESS OTHERWISE SPECIFIED LEADING DIMENSIONS ARE INCHES DIMENSIONS IN [] ARE MILLIMETERS		L-com an INFINIT® brand		INTERPRET ALL DIMENSIONS AND TOLERANCES PER ASME Y14.5	
TOLERANCES:		Website: www.L-com.com		SCALE	
X = ±.2 [5]		FRACTIONS		NONE	
XX = ±.02 [0.5]		± 1/32		SHEET	
XXX = ±.005 [0.13]		ANGLES ± 1°		1 OF 1	
CABLE LENGTH TOLERANCES:		Phone: 1.800.341.5266 1.978.682.6936		DESCRIPTION	
≤12 [305] = +1 [25] / -0				C6A M12X F PN/RJ45 PVC 26 TEL	
>12 [305] ≤ 60 [1524] = +2 [51] / -0					
>60 [1524] ≤ 120 [3048] = +4 [102] / -0					
>120 [3048] ≤ 300 [7620] = +6 [152] / -0					
>300 [7620] = +5% / -0					
ALL DIMENSIONS ARE FOR REFERENCE ONLY AND SUBJECT TO CHANGE WITHOUT NOTICE. UN-DIMENSIONED/NON-CRITICAL FEATURES MAY VARY IN SIZE AND LOCATION COLORS MAY VARY		SIZE		ITEM NO.	
		A		TRG611-C6T	
		CAGE CODE		REV	
		43321		A	
		DRAWN BY			
		BZHANG			