

6

5

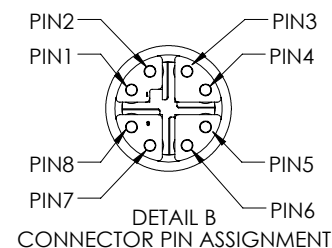
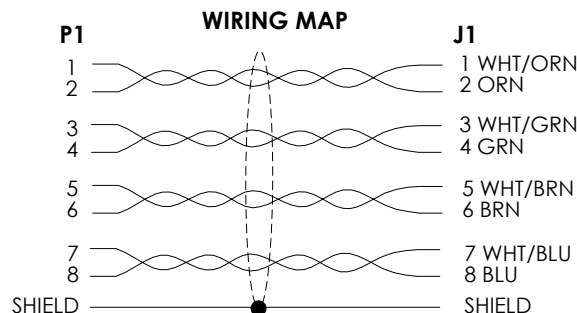
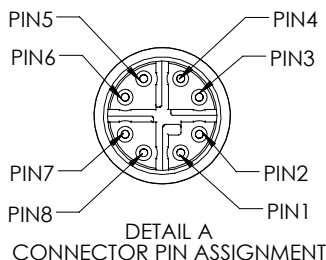
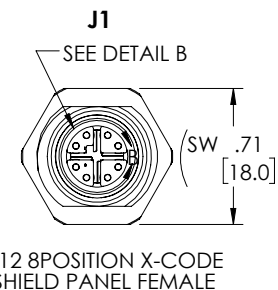
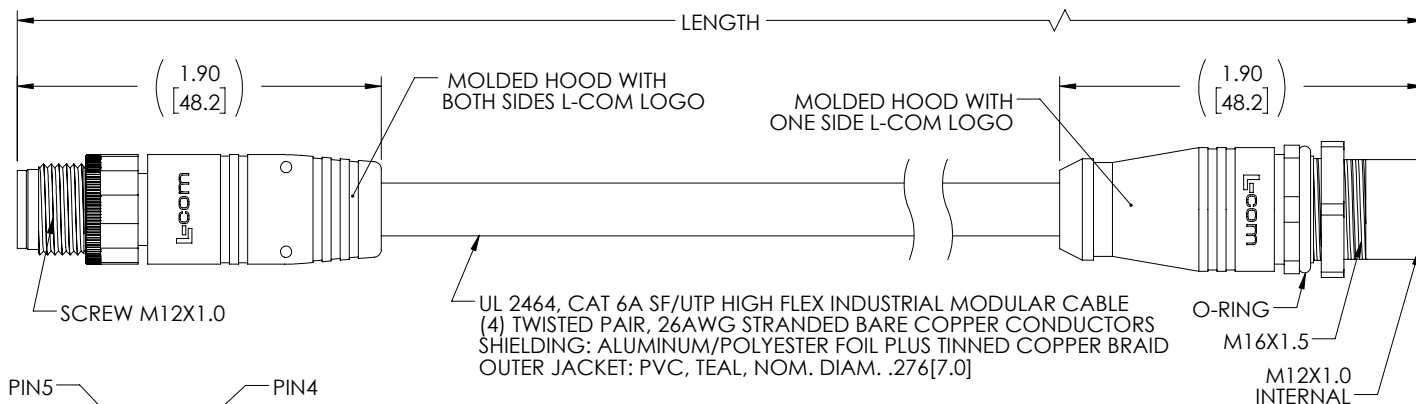
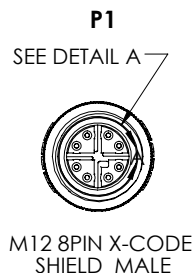
4

3

2

1

| REVISION |     |                 |            |            |
|----------|-----|-----------------|------------|------------|
| ZONE     | REV | DESCRIPTION     | DATE       | CHANGED BY |
|          | A   | INITIAL RELEASE | 08/04/2025 | BZHANG     |
|          |     |                 |            | WLI        |



## NOTES

### MATERIAL:

MOLDED HOOD: PVC, BLACK,UV RESISTANCE  
M12 INSULATOR: NYLON, BLACK  
M12 SHELL/SCREW NUT: BRASS, NICKEL PLATE  
M12 CONTACTS: PHOSPHOR BRONZE,15" MIN. GOLD PLATE  
M12 O-RING:VITON

### ELECTRICAL:

NOMINAL VOLTAGE RATING: 48V AC/DC  
MAX CURRENT: 0.5A

### APPLICATION:

INGRESS PROTECTION RATING IS IP67(MATED)

### ENVIRONMENTAL:

OPERATING TEMPERATURE RANGE: -40°C TO +75°C  
CABLE JACKET: OIL, SUNLIGHT and WELD SPLATTER RESISTANT  
CABLE FLEX LIFE: 1 MILLION CYCLE TEST (10X CABLE OD)  
10 MILLION CYCLE TEST (20X CABLE OD)

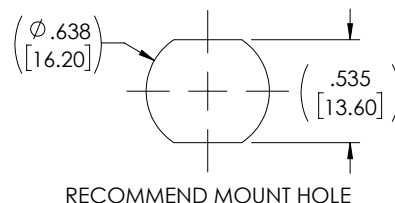
### MISCELLANEOUS

CABLE ASSEMBLIES TO BE TESTED FOR CONTINUITY  
WIRED TO IEC 61076-2-109 STANDARDS  
CABLE ASSEMBLY SHALL BE INDIVIDUALLY PACKAGED IN  
ACCORDANCE WITH L-COM SPECIFICATION PS-0031.

### REGULATORY COMPLIANCE:

EU ROHS DIRECTIVE (MOST RECENT RELEASED VERSION)

THE INFORMATION CONTAINED IN THIS DRAWING IS THE SOLE PROPERTY OF INFINITE ELECTRONICS, INC. ANY REPRODUCTION IN PART OR WHOLE WITHOUT THE WRITTEN PERMISSION OF INFINITE ELECTRONICS, INC. IS PROHIBITED. THESE COMMODITIES, TECHNOLOGY OR SOFTWARE WERE EXPORTED FROM THE UNITED STATES IN ACCORDANCE WITH THE EXPORT ADMINISTRATION REGULATIONS. DIVERSION CONTRARY TO U.S. LAW PROHIBITED.



| PART NUMBER    | LENGTH |       |
|----------------|--------|-------|
|                | METERS | FEET  |
| TRG626-C6T-05M | 0.5    | 1.64  |
| TRG626-C6T-1M  | 1.0    | 3.28  |
| TRG626-C6T-2M  | 2.0    | 6.56  |
| TRG626-C6T-3M  | 3.0    | 9.84  |
| TRG626-C6T-5M  | 5.0    | 16.41 |
| TRG626-C6T-10M | 10.0   | 32.82 |
| TRG626-C6T-15M | 15.0   | 49.22 |

UNLESS OTHERWISE SPECIFIED  
LEADING DIMENSIONS ARE IN INCHES  
DIMENSIONS IN [ ] ARE MILLIMETERS

#### TOLERANCES:

X = ±.2 [5] FRACTIONS  
XX = ±.02 [0.5] ± 1/32  
XXX = ±.005 [0.13] ANGLES ± 1°

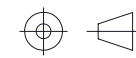
#### CABLE LENGTH TOLERANCES:

≤12 [305] = +1 [25] / -0  
>12 [305] ≤ 60 [1524] = +2 [51] / -0  
>60 [1524] ≤ 120 [3048] = +4 [102] / -0  
>120 [3048] ≤ 300 [7620] = +6 [152] / -0  
>300 [7620] = +5% / -0

ALL DIMENSIONS ARE FOR REFERENCE ONLY  
AND SUBJECT TO CHANGE WITHOUT NOTICE.  
UN-DIMENSIONED/NON-CRITICAL FEATURES  
MAY VARY IN SIZE AND LOCATION  
COLORS MAY VARY

**L-com**  
an INFINIT® brand

Website: www.L-com.com  
Phone: 1.800.341.5266 | 1.978.682.6936



INTERPRET ALL DIMENSIONS AND  
TOLERANCES PER ASME Y14.5

SCALE SHEET

NONE 1 OF 1

DESCRIPTION

C6A M12X M/F PN PVC 26 TEL

| SIZE | CAGE CODE | DRAWN BY | ITEM NO.   | REV |
|------|-----------|----------|------------|-----|
| A    | 43321     | BZHANG   | TRG626-C6T | A   |

6

5

4

3

2

1